

专注于二通插装逻辑阀的研发与制造

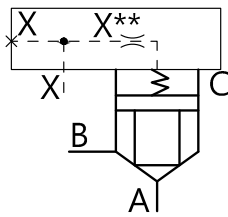
FOUCUS ON 2-WAY CARTRIDGE VALVES



工作原理 WORKING PRINCIPLE

逻辑阀基本元件包括阀套、阀芯、弹簧和密封圈，如图(1)。该阀有三个面积，标为 A_C ， A_A ， A_B 。 A_C 是阀芯大直径确定的圆面积，也是控制腔面积， A_A 是由阀芯小直径确定的圆面积， A_B 是阀芯大直径与小直径之间的环形面积。 A_C 面积上的压力加上弹簧力保持阀芯压紧阀套，使阀处于关闭状态， A_A 和 A_B 面积上的压力倾向于使阀芯抬离阀套，使阀打开。通常通过先导控制阀控制 C 腔的压力 P_C ，使它与油路中最高压力相通，此时 $F < 0$ ，阀芯关闭，或者使它与油箱（低压腔）相通，此时 $F > 0$ ，阀芯开启，或者使 C 腔保持设定压力，让阀芯动态开启或关闭，以作调压阀用。

本公司把比值 $E_V = A_C / A_A$ ，称为逻辑阀的面积比，这是一个与逻辑阀结构和几何形状有关的参数，它对逻辑阀的控制和特性有较大影响。（注意：面积比 E_V ，各公司有不同的规定）



阀芯受力分析

阀芯所受的力的总和为：

$$\Sigma F = P_A A_A + P_B A_B - P_C A_C - F_k - F_s$$

开、关条件

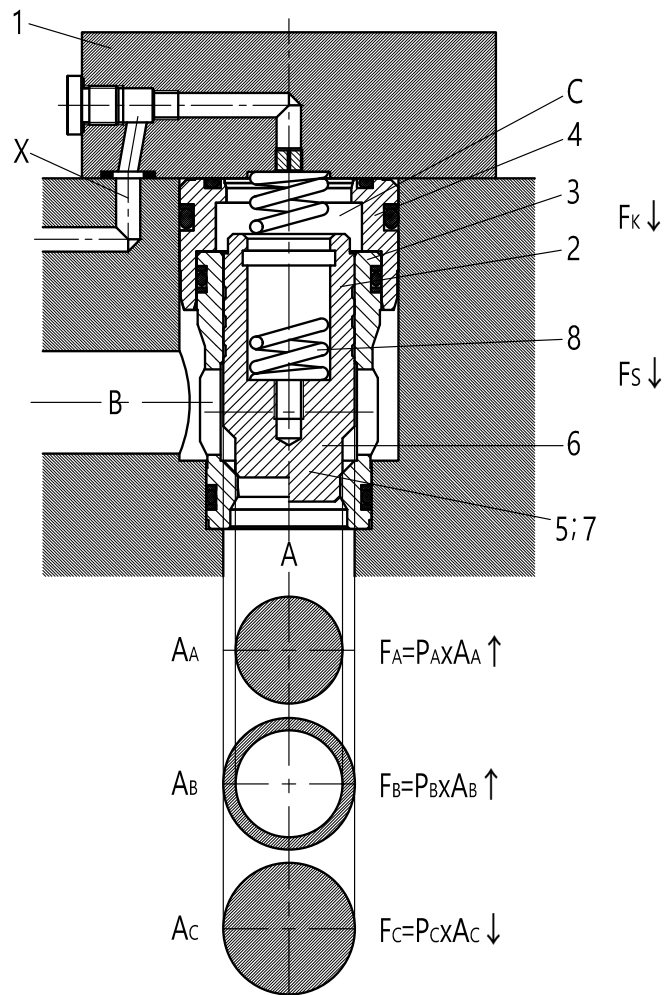
$\Sigma F > 0$ 开启

$\Sigma F < 0$ 关闭

式中：

F_k 弹簧力

F_s 液动力



型号订货说明 MODEL ORDERING

盖板式二通插装逻辑阀订货型号说明

2-WAY CARTRIDGE VALVES MODEL ORDERING

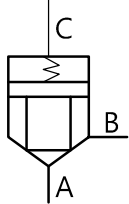
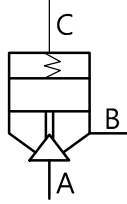
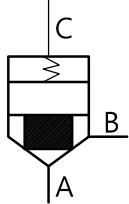
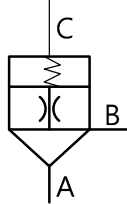
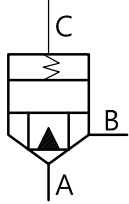
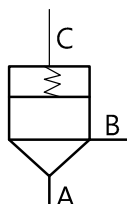
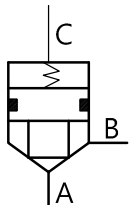
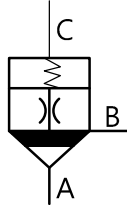
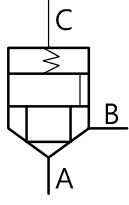
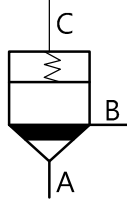
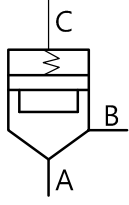
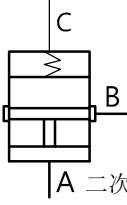
L C D 16 A 20 E 2 S - 2X V - 2 *
1 2 3 4 5 6 7 8 9 10 11 12 其他要求文字说明

- >> 1. 代号 Codename
L — 盖板式二通插装阀插件 (泛称逻辑阀)
L — 2-way cartridge valve insert
- >> 2. 结构类别 Structure category
C — 端面浮动密封 (常备供货)
V — 端面外侧密封
T — 端面不带密封 (盖板凸台密封)
C — End floating seal (Normal Supply)
V — End outside seal
T — End without seal (Cover Stage Seal)
- >> 3. 功能代号 Function code
D — 流量方向型 Flow direction
P — 溢流型 Prefill
K — 液控型 Pilot-operated
R — 减压型 Pressure reducing
O — 常开型 Normally open
- >> 4. 公称通径 Nominal Diameter
按 ISO 7368(DIN 24342)
16 — NG16 63 — NG63
25 — NG25 80 — NG80
32 — NG32 100 — NG100
40 — NG40 125 — NG125
50 — NG50 160 — NG160
- >> 5. 面积比 Area Ratio $E_V=A_C:A_A$
A=1.5:1 AA=2:1 B=1.07:1
AB=1.2:1 M=1.1:1 N=1:1
- >> 6. 开启压力 Open Pressure (bar)
00 — 无弹簧 30 — 3.0
05 — 0.5 40 — 4.0
20 — 2.0 50 — 5.0
- >> 7. 阀芯型式 Valve spool
E — 普通型 可省略标记 Normal
D — 带缓冲头型 With cushion head
(对于 P 功能型阀, 此处 D 表示座式滑阀型)
(For P function type, D means spool poppet valve)
F — 带节流窗口 With throttle window
X — 带侧孔 With side hole
- >> 8. 阀芯辅助代号 Valve spool code
0 — 不带阻尼孔 Without orifice
D.O.K.R 功能型阀, 可省略标记
1 — 带固定阻尼孔 With fix orifice
P 功能溢流型阀, 可省略标记
(固定阻尼孔 16-32 为 1.2; 40-50 为 1.5)
2 — 带可换阻尼螺塞 With replaceable damping plug
- >> 9. 阀芯密封形式 Valve spool sealing
无标记 - 不带密封 None- no sealing
S — O 型圈密封 O ring sealing
F — 聚四氟乙烯方形圈密封 PTFE Square ring sealing
- >> 10. 设计系列 Design series
2X — 20-29 系列号
- >> 11. 密封件材料 Seal material
无标记 — 丁腈橡胶 None- Nitrile rubber
V — 氟橡胶 Fluorine rubber
Si — 硅胶 Silicon
- >> 12. 材料 Material
无标记 — GCr15 None- GCr15
1 — 4Cr13、3Cr13
2 — 0Cr17Ni7A1、9Cr18

结构类别图示 STRUCTURAL TYPE

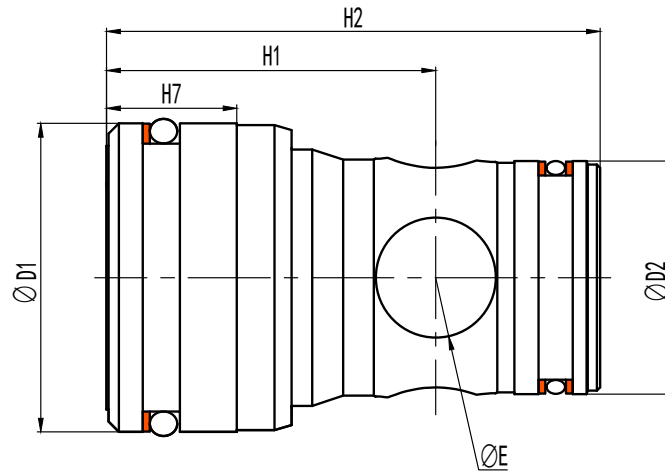
<p>LC 型 LC Type</p> 	 <p>最大使用压力 Max pressure 420bar</p> <p>拆卸螺纹孔 Disassembly screw hole</p> <p>NG16-NG40 为 M6 NG50 以上为 M10</p> <p>端面浮动密封 (常备供货) End floating seal (Normal Supply)</p>
<p>LV 型 LV Type</p> 	 <p>最大使用压力 Max pressure 315bar</p> <p>端面外侧密封 End outside seal</p>
<p>LT 型 LT Type</p> 	 <p>最大使用压力 Max pressure 420bar</p> <p>端面不带密封 (盖板凸台密封) End without seal (Cover Stage Seal)</p>

功能符号 FUNCTIONAL SYMBOL

<p>» 流量方向通用型 Flow direction</p>		<p>» 液控单向阀型 Pilot-operated check valve</p>	
<p>» 流量方向缓冲型 Flow direction buffer</p>		<p>» 压力普通型阀 阀芯带阻尼孔 Pressure relief poppet valve with orifice</p>	
<p>» 流量方向节流窗口型 Flow direction throttling window</p>		<p>» 压力普通型阀 阀芯不带阻尼孔 Pressure relief poppet valve without orifice</p>	
<p>» 阀芯带密封圈型 Valve spool with seal ring</p>		<p>» 压力座式滑阀 阀芯带阻尼孔 Pressure relief spool poppet valve with orifice</p>	
<p>» 流量单向阀型 Flow check valve</p>		<p>» 压力座式滑阀 阀芯不带阻尼孔 Pressure relief spool poppet valve without orifice</p>	
<p>» 流量方向常开型 Flow direction normally open</p>		<p>» 压力减压型 Pressure Reducing Valve</p>	

外形尺寸 DIMENSIONS

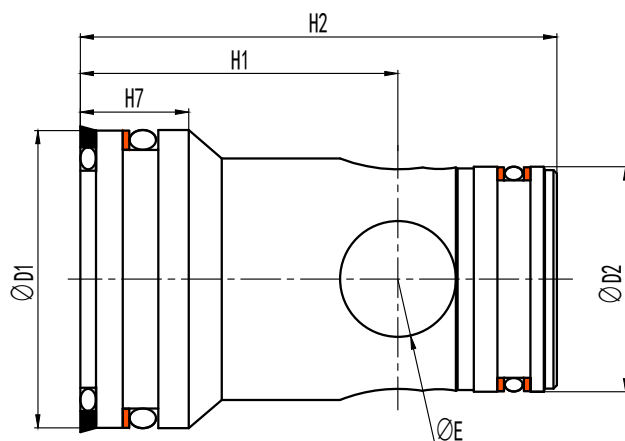
➤ LC-16~160- *



代码 CODE 规格 SIZE	$\varnothing D1$	$\varnothing D2$	H1	H2	H7	$\varnothing E$	重量 WEIGHT (kg)
16	32	25	36	56	14	4-12	0.25
25	45	34	48	72	14.5	4-16	0.5
32	60	45	58	85	18	4-20	1.1
40	75	55	69	105	19.5	6-20	1.9
50	90	68	80	122	20	6-25	3.9
63	120	90	103	155	24	6-32	7.2
80	145	110	135	205	28	6-40	13
100	180	135	163	245	31	6-50	27
125	225	200	178	300	35	6-60	44
160	300	270	205	425	40	6-75	75

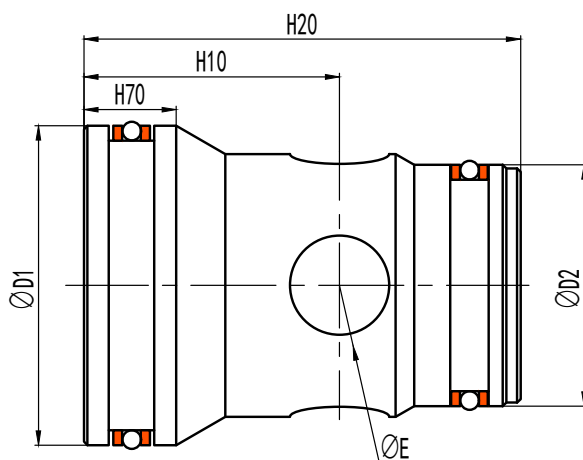
外形尺寸 DIMENSIONS

» LV-16~63- *



代码 CODE 规格 SIZE	Ø D1	Ø D2	H1	H2	H7	Ø E	重量 WEIGHT (kg)
16	32	25	36.5	56	16	4-12	0.25
25	45	34	48	72	16	4-16	0.5
32	60	45	58	85	21	4-20	1.1
40	75	55	69	105	24	6-20	1.9
50	90	68	80	122	25	6-25	3.9
63	120	90	103	155	27	6-32	7.2

» LT-16~63- *

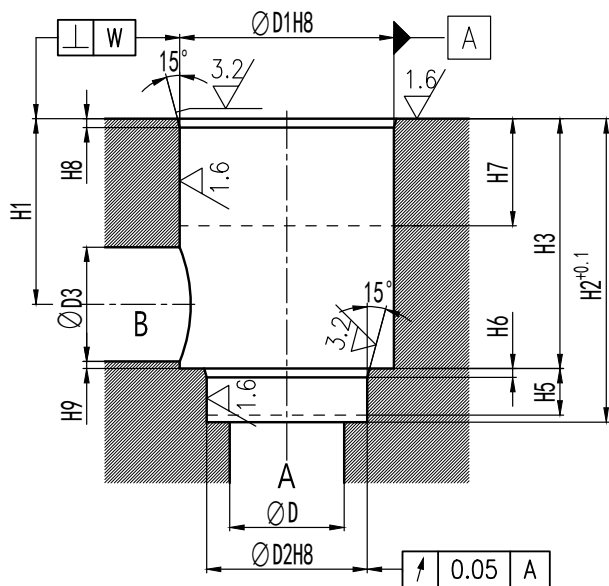


代码 CODE 规格 SIZE	Ø D1	Ø D2	H10	H20	H70	Ø E	重量 WEIGHT (kg)
16	32	25	26	46	10	4-12	0.21
25	45	34	36	61.5	12	4-16	0.43
32	60	45	46	73	15	4-20	0.93
40	75	55	58	90	15	4-20	1.58
50	90	68	66	107	15	6-25	3.18
63	120	90	87	137	18	6-32	6.21

安装孔尺寸 MOUNTING HOLE SIZE

符合 ISO7368, DIN24342, GB2877, 通径 125, 160 除外

Comply with ISO7368, DIN24342, GB2877, except for diameter 125 and 160



说明:

1. H7 为参考值, 实际尺寸仅需大于与插件大径最大配合长度。

2. H9 为控制尺寸, 不论 H1, D3 尺寸怎样变动, 均应保证 H9 大于表中给定值。

3. B 孔可沿 $\varnothing D1$ 孔中心线作圆周旋转, 但不能损坏控制孔和固定孔。

4. D5 为油口 X、Y、Z1、Z2 的大小。

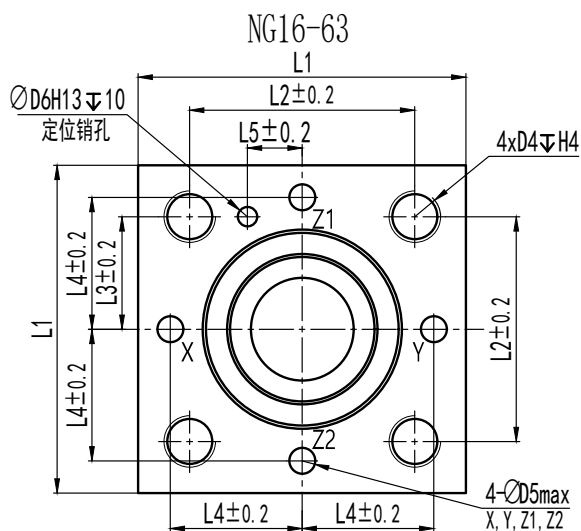
Note:

1. H7 is a reference value, and the actual size only needs to be larger than the maximum mating length of the major diameter of the insert unit.

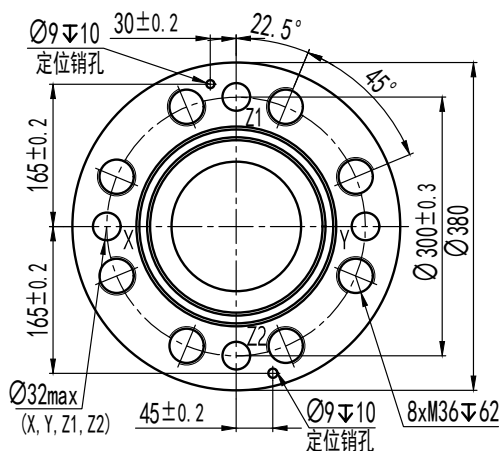
2. H9 is the control size, no matter how the size of H1, D3 changes, it should be ensured that H9 is larger than the value given in the table.

3. Hole B can be rotated in a circle along the center line of hole $\varnothing D1$, but the control hole and fixed hole cannot be damaged.

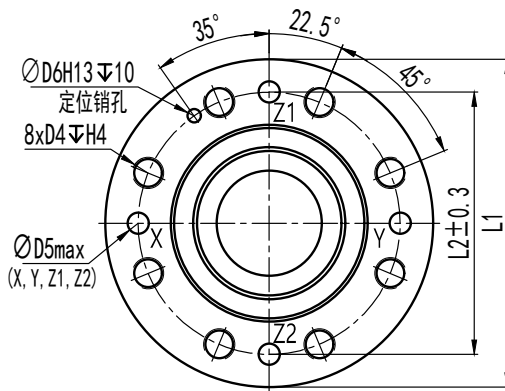
4. D5 is the size of fluid ports X, Y, Z1, and Z2.



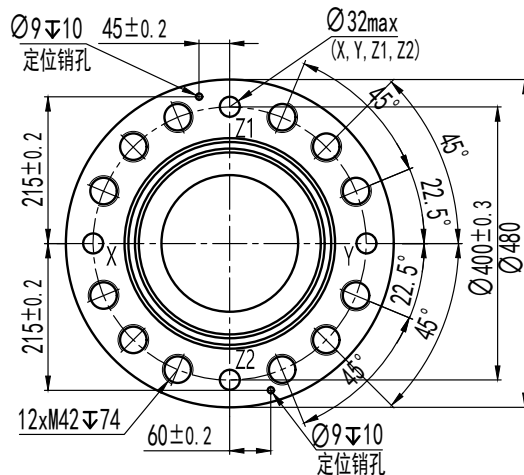
NG125



NG80-100



NG160



安装孔尺寸 MOUNTING HOLE SIZE

➤符合 ISO7368,DIN24342,GB2877, 通径 125,160 除外
Comply with ISO7368, DIN24342, GB2877, except for diameter 125 and 160

NG	16	25	32	40	50	63	80	100	125	160	
∅ D	16	25	32	40	50	63	80	100	150	200	
∅ D1H8	$32^{+0.039}_0$	$45^{+0.039}_0$	$60^{+0.046}_0$	$75^{+0.046}_0$	$90^{+0.054}_0$	$120^{+0.054}_0$	$145^{+0.063}_0$	$180^{+0.063}_0$	$225^{+0.072}_0$	$300^{+0.081}_0$	
∅ D2H8	$25^{+0.033}_0$	$34^{+0.039}_0$	$45^{+0.039}_0$	$55^{+0.046}_0$	$68^{+0.046}_0$	$90^{+0.054}_0$	$110^{+0.054}_0$	$135^{+0.063}_0$	$200^{+0.072}_0$	$270^{+0.081}_0$	
∅ D3	Max	25	32	40	50	63	80	100	125	160	250
	Min	16	25	32	40	50	63	80	100	125	160
∅ D4	M8	M12	M16	M20	M20	M30	M24	M30	-	-	
∅ D5	4	6	8	10	10	12	16	20	-	-	
∅ D6	4	6	6	6	8	8	10	10	-	-	
H1	Max	34	44	52	64	72	95	130	155	192	268
	Min	29.5	40.5	48	59	65.5	86.5	120	142	175	243
H2	56	72	85	105	122	155	205	245	300	425	
H3	43 ± 0.2	58 ± 0.2	70 ± 0.2	87 ± 0.3	100 ± 0.3	130 ± 0.3	175 ± 0.4	210 ± 0.4	257 ± 0.5	370 ± 0.5	
H4	20	25	35	45	45	65	50	65	-	-	
H5	11	12	13	15	17	20	25	29	31	45	
H6	2	2.5	2.5	3	3	4	5	5	7 ± 0.5	8 ± 0.5	
H7	25	35	35	35	40	45	45	55	55	55	
H8	2	2.5	2.5	3	4	4	5	5	5.5 ± 0.2	5.5 ± 0.2	
H9	0.5	1	1.5	2.5	2.5	3	4.5	4.5	5	5	
L1	65/75	85	102	125	140	180	250	300	-	-	
L2	46	58	70	85	100	125	200	245	-	-	
L3	23	29	35	42.5	50	62.5	-	-	-	-	
L4	25	33	41	50	58	75	-	-	-	-	
L5	10.5	16	17	23	30	38	-	-	-	-	
W	0.05	0.058	0.1	0.1	0.1	0.2	0.2	0.2	0.2	0.2	

技术参数 TECHNICAL PARAMETERS

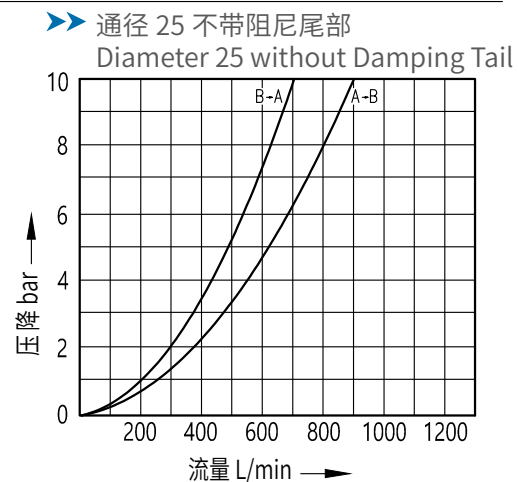
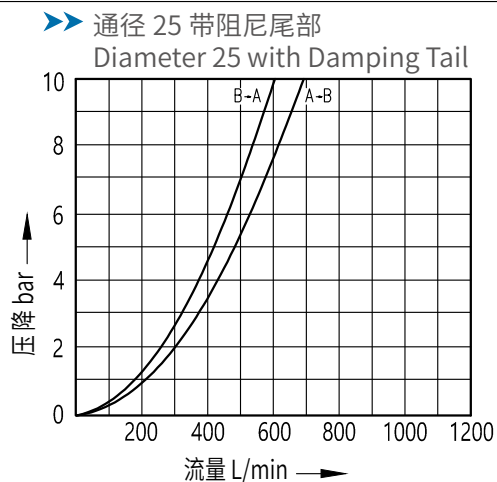
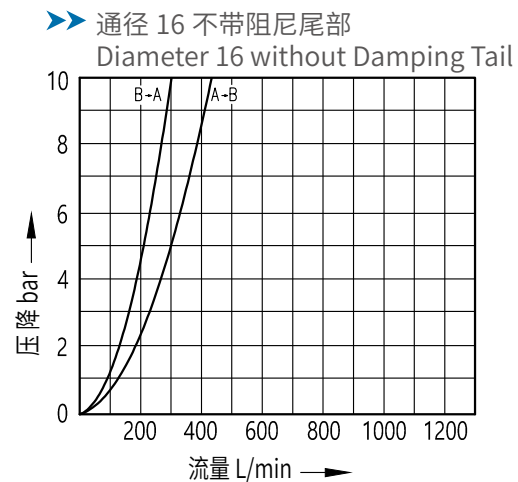
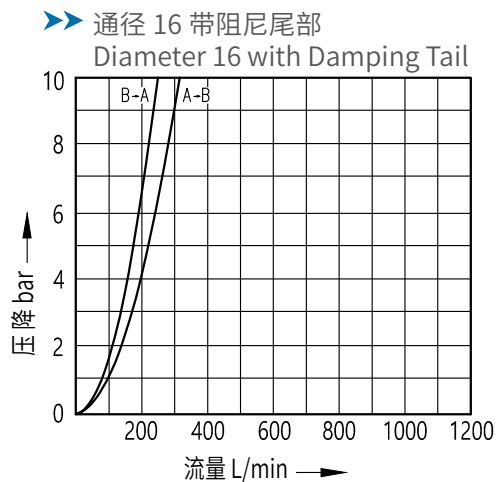
基本技术参数 SPECIFICATIONS >>>

介质 Lubricant medium	矿物油（液压油）。其他介质应用请咨询本公司 Hydraulic fluid. Or send us inquiry about lubricant medium		
温度范围°C Temperature	-20~80		
粘度范围 mm ² /s Viscous	2.8~500		
清洁度 Cleanliness	至少 (at least) 达到 20/18/15 级 (ISO4406)		
推荐过滤器 Filter	β ₁₀ ≥ 75		
最大工作压力 Max. Working Pressure	LC: 420bar	LV: 315bar	LT: 420bar

通径和流量范围（参见压差流量特性） DIAMETER FLOW RANGE >>>

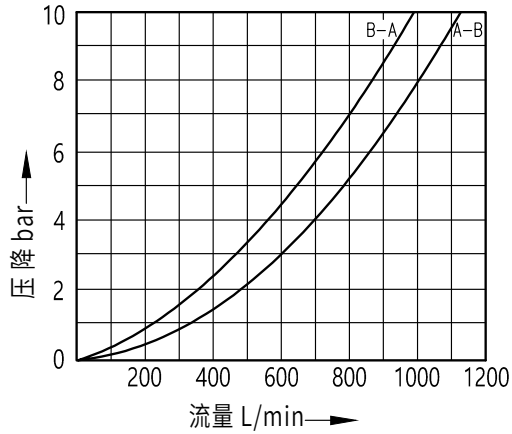
公称通径	mm	16	25	32	40	50	63	80	100	125	160
流量范围 L/min	ΔP 5bar	250	490	840	1400	1900	3300	4200	6800	10800	19000
	ΔP 2bar	160	350	550	850	1200	2000	2500	4000	6700	13000

压差流量特性 DIFFERENTIAL PRESSURE FLOW CHARACTERISTICS >>>

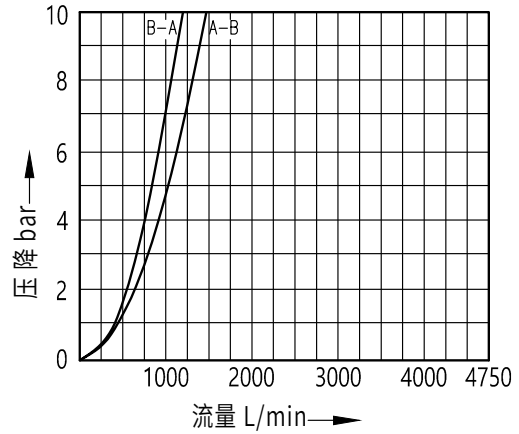


技术参数 TECHNICAL PARAMETERS

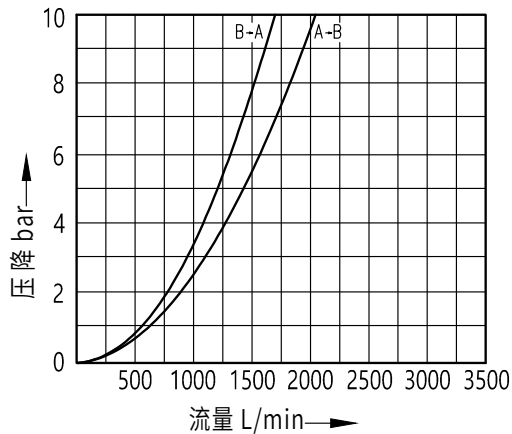
➤➤ 口径 32 带阻尼尾部
Diameter 32 with Damping Tail



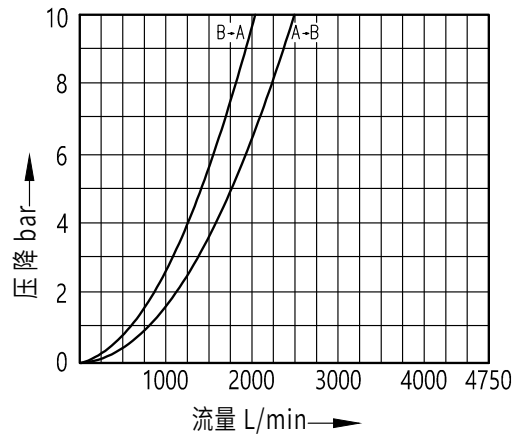
➤➤ 口径 32 不带阻尼尾部
Diameter 32 without Damping Tail



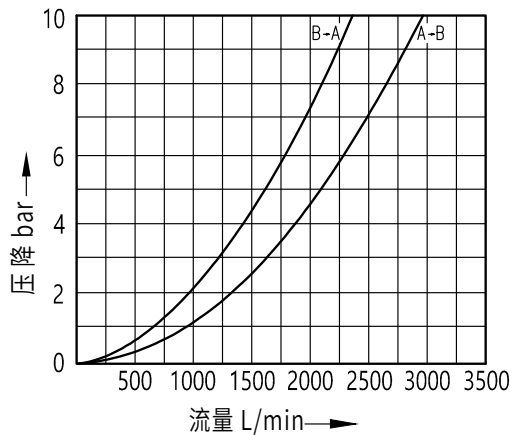
➤➤ 口径 40 带阻尼尾部
Diameter 40 with Damping Tail



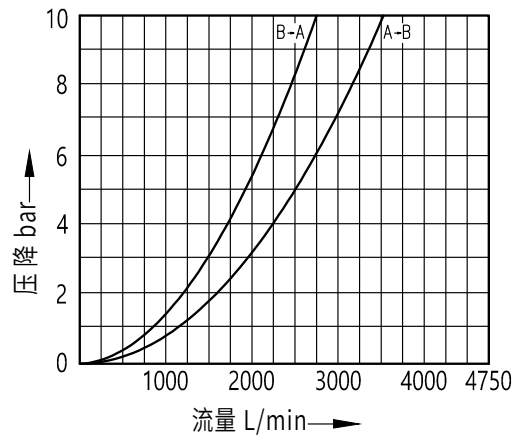
➤➤ 口径 40 不带阻尼尾部
Diameter 40 without Damping Tail



➤➤ 口径 50 带阻尼尾部
Diameter 50 with Damping Tail

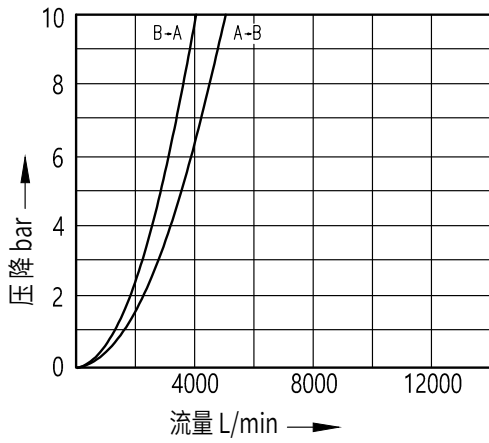


➤➤ 口径 50 不带阻尼尾部
Diameter 50 without Damping Tail

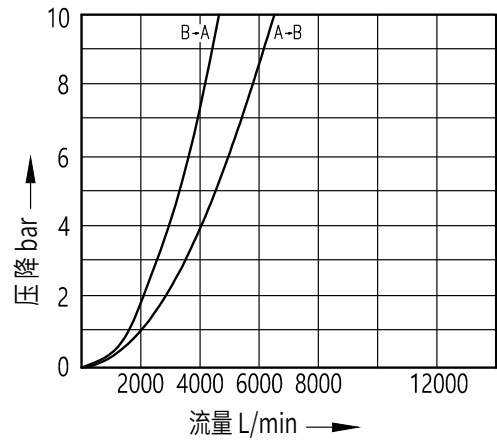


技术参数 TECHNICAL PARAMETERS

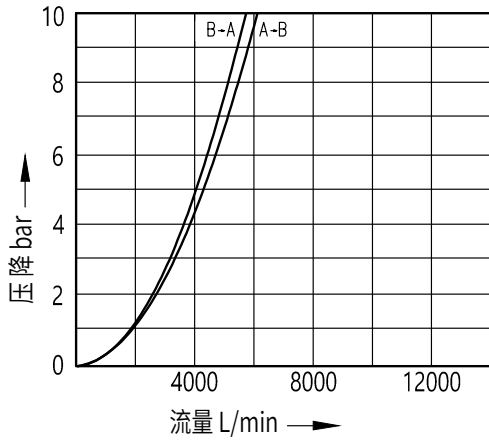
▶▶ 通径 63 带阻尼尾部
Diameter 63 with Damping Tail



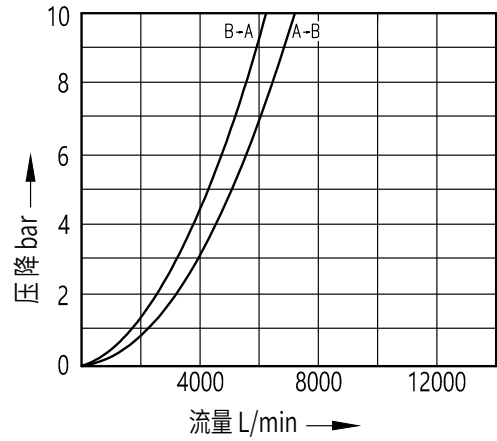
▶▶ 通径 63 不带阻尼尾部
Diameter 63 without Damping Tail



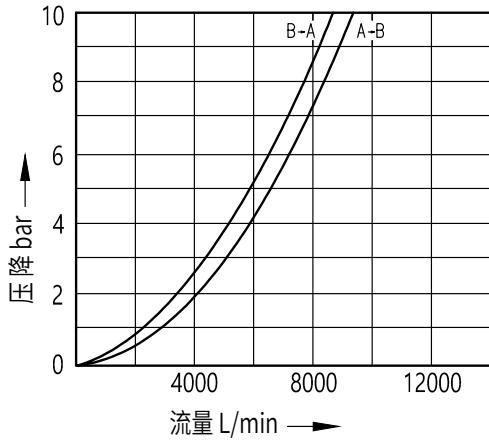
▶▶ 通径 80 带阻尼尾部
Diameter 80 with Damping Tail



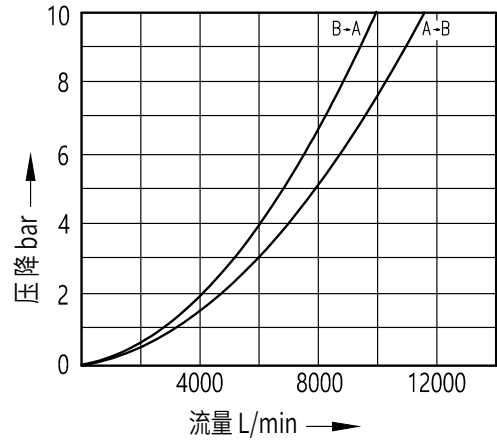
▶▶ 通径 80 不带阻尼尾部
Diameter 80 without Damping Tail



▶▶ 通径 100 带阻尼尾部
Diameter 100 with Damping Tail

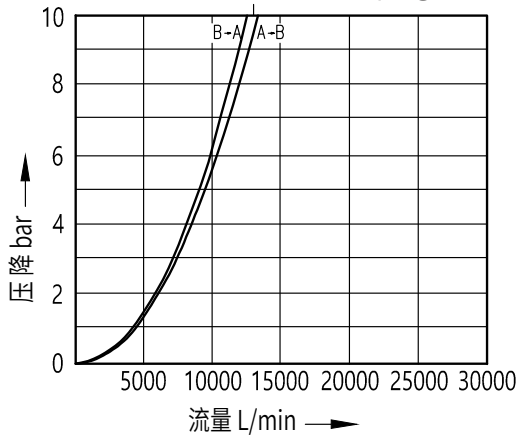


▶▶ 通径 100 不带阻尼尾部
Diameter 100 without Damping Tail

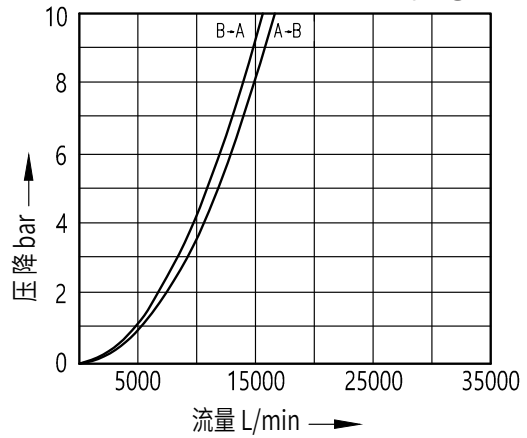


技术参数 TECHNICAL PARAMETERS

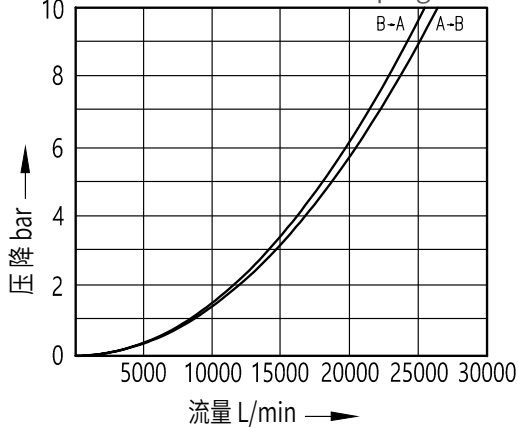
➤ 通径 125 带阻尼尾部
Diameter 125 with Damping Tail



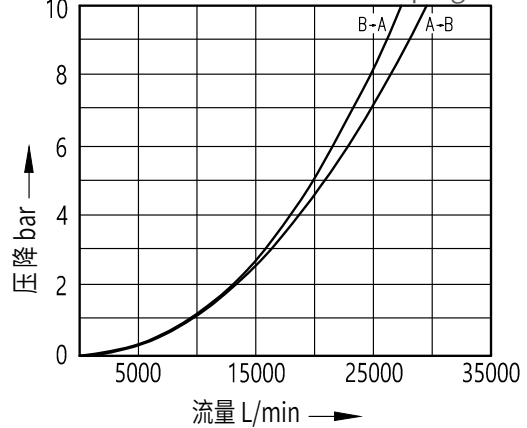
➤ 通径 125 不带阻尼尾部
Diameter 125 without Damping Tail



➤ 通径 160 带阻尼尾部
Diameter 160 with Damping Tail



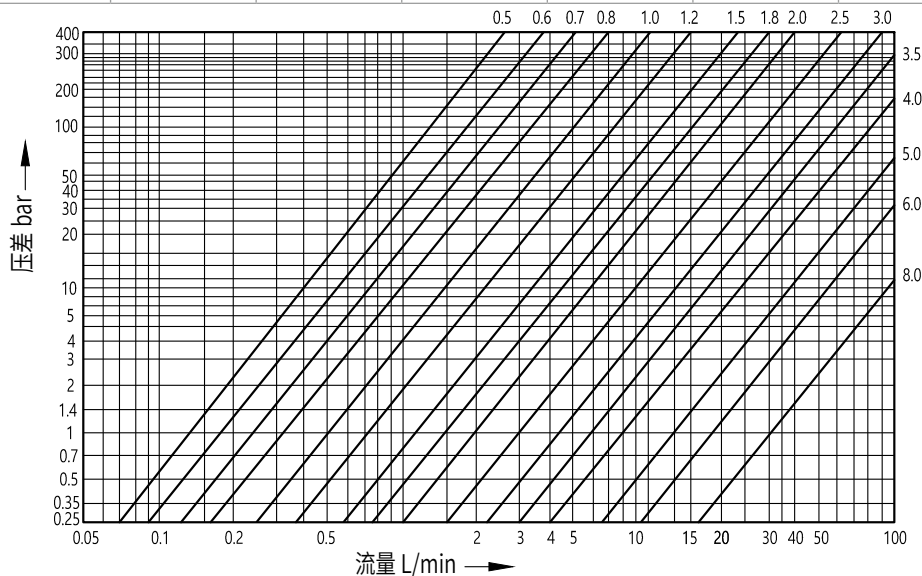
➤ 通径 160 不带阻尼尾部
Diameter 160 without Damping Tail



阻尼孔孔径及压差——流量曲线（供参考）

Damping hole diameter and pressure difference-Flow curve (for reference) ➤➤

公称通径 mm	16	25	32	40	50	63	80	100
通用阻尼孔孔径	0.8	1.0	1.2	1.5	1.8	2.0	2.0	2.5



配套元件 COMPONENT PARTS



➤➤ 二位二通电磁阀
2-POSITION 2-WAY
SOLENOID VALVE



➤➤ 单向阀 (锥阀型)
CHECK VALVE



➤➤ 梭阀
SHUTTLE VALVE



➤➤ 直动式溢流阀
RELIEF VALVE



➤➤ 先导式溢流阀
RELIEF VALVE



➤➤ 卸载阀
UNLOADING VALVE



➤➤ 节流阀
NEEDLE VALVE



➤➤ 止回节流阀
THROTTLE CHECK VALVE

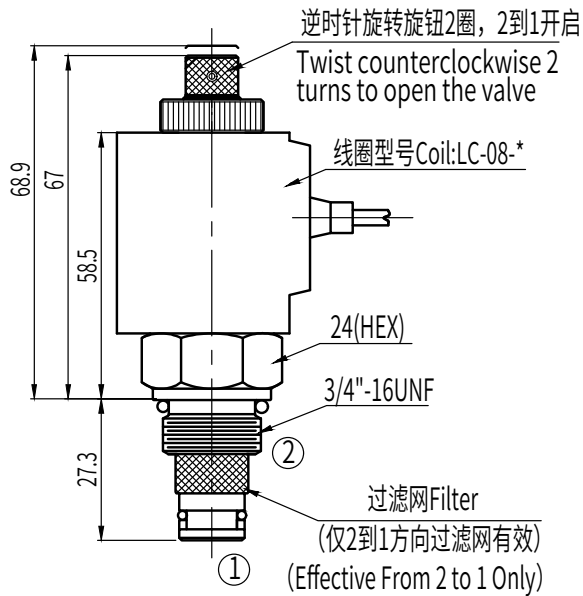
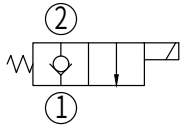


➤➤ 节流阀
NEEDLE VALVE

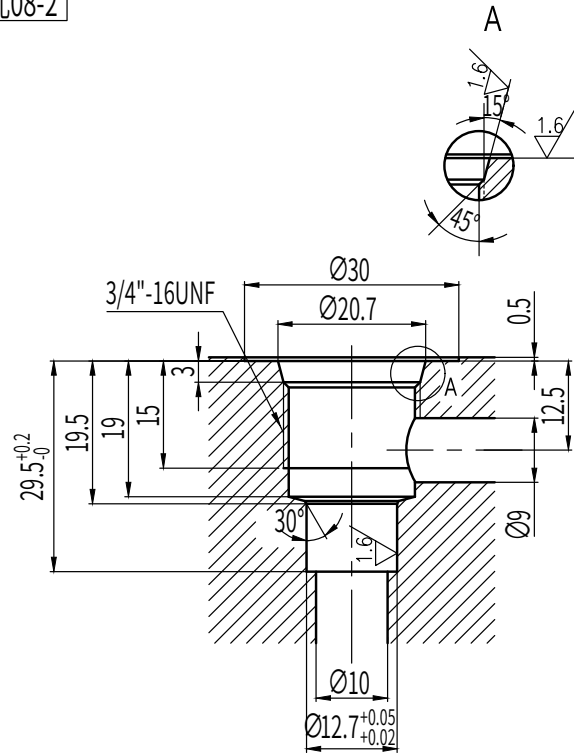


➤➤ 单向节流阀
FLOW CONTROL VALVE

二位二通电磁阀 2-Position 2-Way Solenoid Valve 配套元件Component Parts



插孔08-2



产品说明

- 失电时，1到2相当于单向阀，2到1关闭；得电时，2到1开启
- 手动应急：逆时针旋转旋钮2圈，2到1开启；顺时针旋转旋钮2圈，返回常态
- 最大压力：280bar
- 额定流量：18.9L/min
- 内泄漏：2滴/min
- 工作温度：-40°C~+100°C
- 油液：矿物油粘度7.4~420 cSt
- 油质的清洁度为NAS11级，需要25或更精密的过滤器

Features

- When de-energized, the valve acts as a check valve, allowing flow from 1 to 2, while blocking flow from 2 to 1. When energized, the poppet lifts to open the 2 to 1 flow path
- Max. Pressure: 280bar
- Rated Flow: 18.9L/min
- Leakage: 2drops/min
- Working Temperature: -40°C~+100°C
- Fluid: Mineral-based fluids with viscosities of 7.4 to 420 cSt
- The quality of the fluid si degree NAS11, 25 micron or finer filter is recommended

型号说明 How to Order

CSV-08-2 NC P- * - *

1 2 3 4 5 6 7

1 功能 Function

CSV=电磁阀 Solenoid Valve

2 规格 Size

08=08规格

3 流道类型 Flow Path

2=二通-2-way

4 模式 Mode

NC=常闭 Normally Closed

5 类型 Type

P=锥阀型 Poppet

6 手控应急 Manual

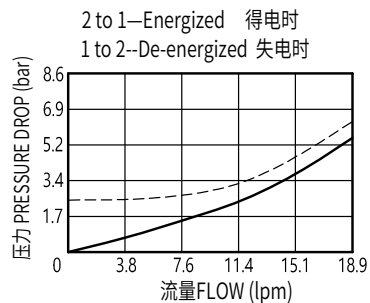
空白 Blank=无手控应急 None

M=手控应急 Manual Override

7 电压 Voltage

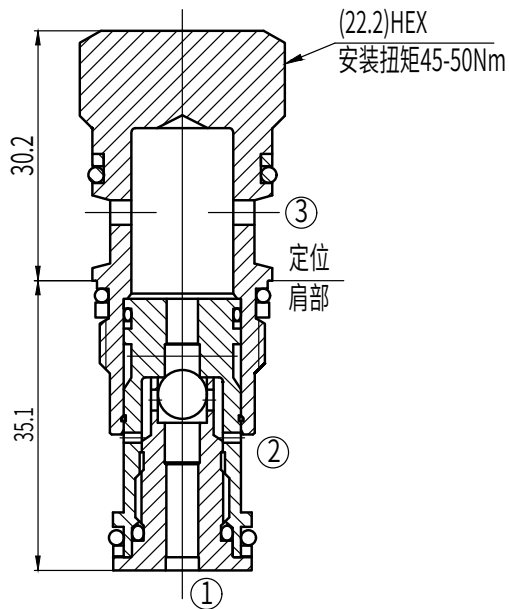
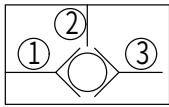
D1=12 V ; D2=24 V ; A2=220 V

压力-流量曲线 PRESSURE DROP VS.FLOW

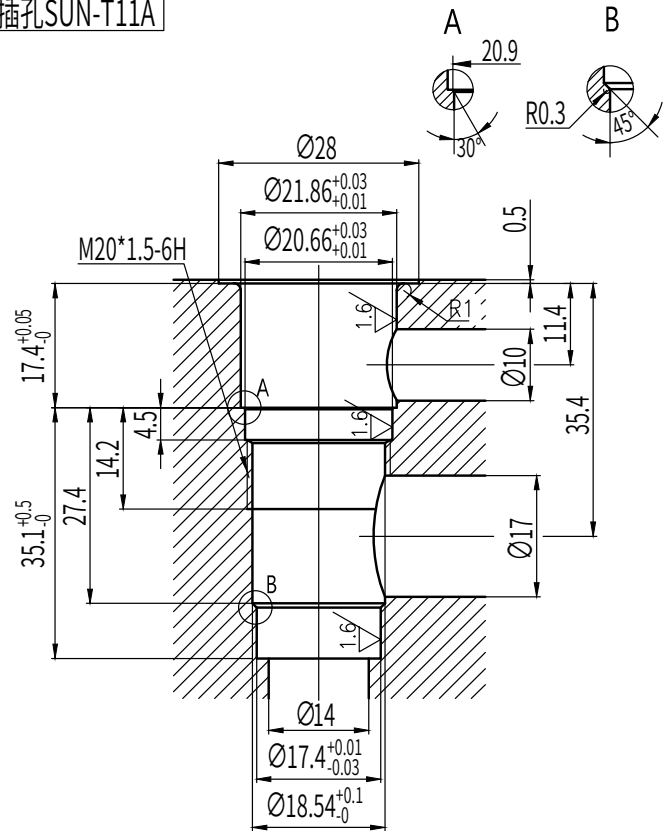


梭阀 Shuttle Valve

配套元件 Component Parts



插孔SUN-T11A



产品说明

- 当1口超过3口的压力时，1到2打开；当3口超过1口的压力时，3到2打开
- 工作压力：350bar
- 额定流量：10L/min
- 内泄漏：5滴/min(350bar)
- 工作温度：-40°C~+120°C
- 油液：矿物油粘度7.4~420 cSt
- 油质的清洁度为NAS11级，需要25或更精密的过滤器

Features

- The valve will allow from the higher pressure of port 1 or 3 to the port 2
- Operating Pressure : 350bar
- Flow: 10L/min
- Internal Leakage : 5 drops/min (at 350bar)
- Temperature: -40°C~+120°C
- Fluid: Mineral-based fluids with viscosities of 7.4 to 420 cSt
- The quality of the fluid si degree NAS11, 25 micron or finer filter is recommended

型号说明 How to Order

CCSA D-X X *

1 2 3 4 5

1 功能 Function

CCSA=梭阀 Ball Type, Cartridge Shuttle Valve

2 流量 Flow

D=10L/min 油口2为信号口

3 控制方式 Control

X=不可调

4 调压范围 Adjustment Range

X=不可调

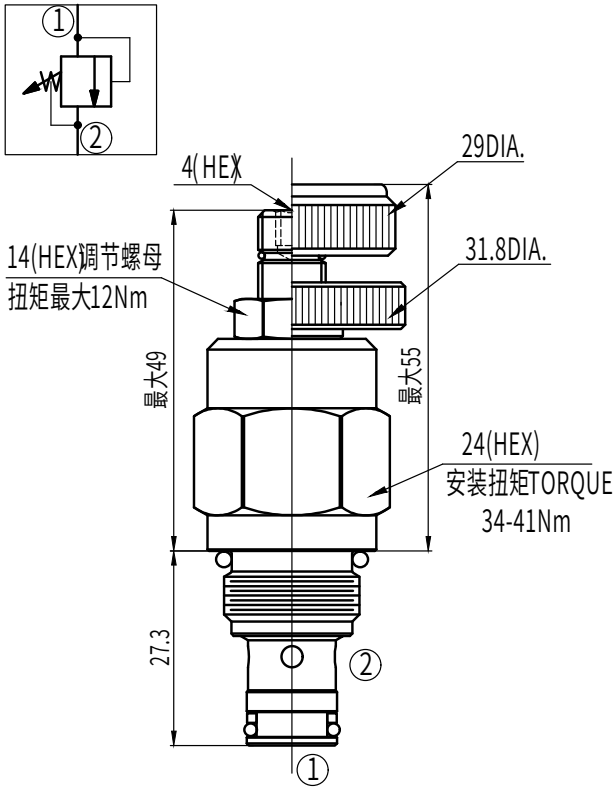
5 油封 Seal Kits

N: 丁腈橡胶 Nitrile Rubber, 可缺省 Buna-N

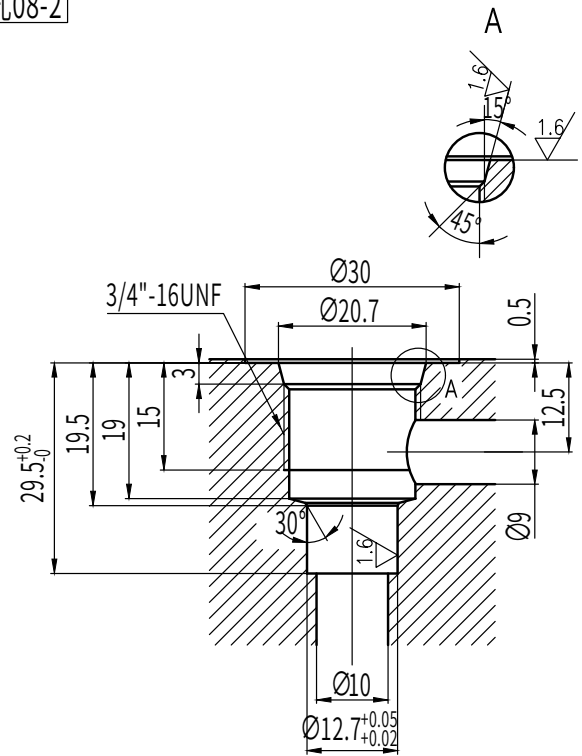
V: 氟橡胶 Viton

直动式溢流阀(先导级,小微流量) Relief Valve

配套元件Component Parts



插孔08-2



产品说明

- 1口最大工作压力: 450bar
- 2口最大工作压力: 140bar
- 额定流量: 3L/min(适用于先导或远控)
- 内泄漏: 15 滴/min
- 工作温度: -40°C~+120°C
- 油液: 矿物油粘度7.4~420 cSt
- 油质的清洁度为NAS11级, 需要25或更精密的过滤器

Features

- Max. Operating Pressure Port 1 : 450bar
- Max. Operating Pressure Port 2 : 140bar
- Flow: 3L/min(See pressuer drop VS. flow graph)
- Internal Leakage: 15 drops/minmax
- Temperature: -40°C~+120°C
- Fluid: Mineral-based fluids with viscosities of 7.4 to 420 cSt
- The quality of the fluid si degree NAS11, 25 micron or finer filter is recommended

型号说明 How to Order

CVSAN-08A-**-**-*

1 2 3 4

1 功能 Function

CVSAN=直动式溢流阀
Direct-Acting Relief Valve

2 规格 Size

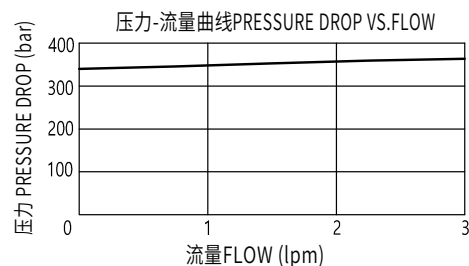
08=08规格

3 调节方式 Adjustment Way

空白 Blank=5/32"内六角调节杆
for 5/32" Hex Allen Head
K=调节手轮 Hand Knob

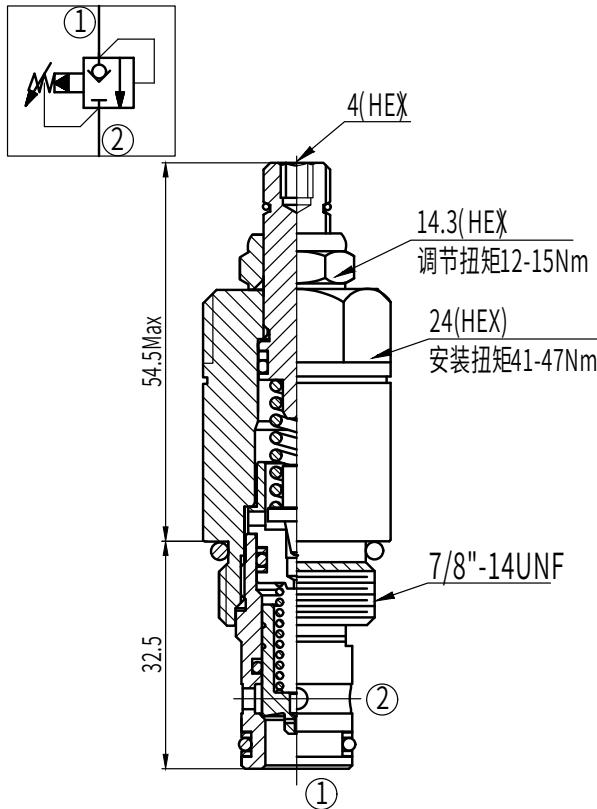
4 弹簧调压范围 Spring Ranges

空白 Blank=35-350bar
Preset预设定: 210bar
65=300-450bar

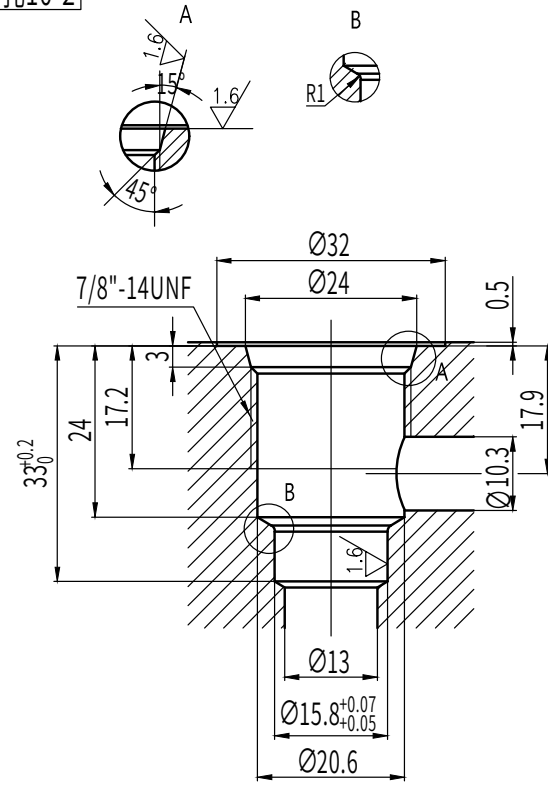


先导式溢流阀(锥阀型, 极小内漏)Relief Valve

配套元件Component Parts



插孔10-2



产品说明

- 最大工作压力:420bar
- 额定流量: 120L/min(见压力流量曲线)
- 内泄漏: 5 滴/min
- 工作温度: -40°C~+120°C
- 油液: 矿物油粘度7.4 ~420 cSt
- 油质的清洁度为NAS11级, 需要25或更精密的过滤器

Features

- Max.Operating Pressure:420bar
- Flow: 120L/min(See pressuer drop VS. flow graph)
- Internal Leakage: 5 drops/min
- Temperature: -40°C~+120°C
- Fluid: Mineral-based fluids with viscosities of 7.4 to 420 cSt
- The quality of the fluid si degree NAS11, 25 micron or finer filter is recommended

型号说明 How to Order

CPOPRV2-10-**-*/****

1 2 3 4 5

1 功能 Function

CPOPRV2=先导式溢流阀
Pilot-Operated Poppet-type Relief Valve

2 规格 Size

10=10规格

3 弹簧调压范围 Spring Ranges

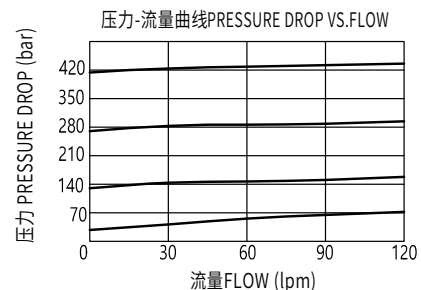
8=0.5-55bar Preset预设:47bar
20=35-140bar Preset预设:48bar
40=70-280bar Preset预设:88bar
60=140-420bar Preset预设:140bar

4 油封 Seal Kits

空白 Blank=O型密封圈 (for O-ring Seals)

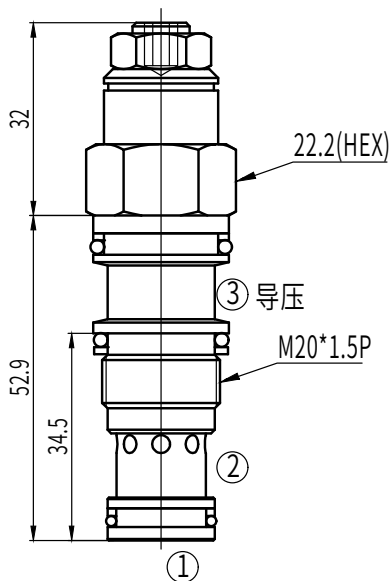
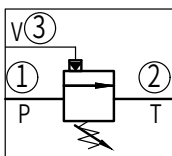
5 设定压力 Setting In Bar

空白 Blank=预设Preset 例Example:0250-250bar

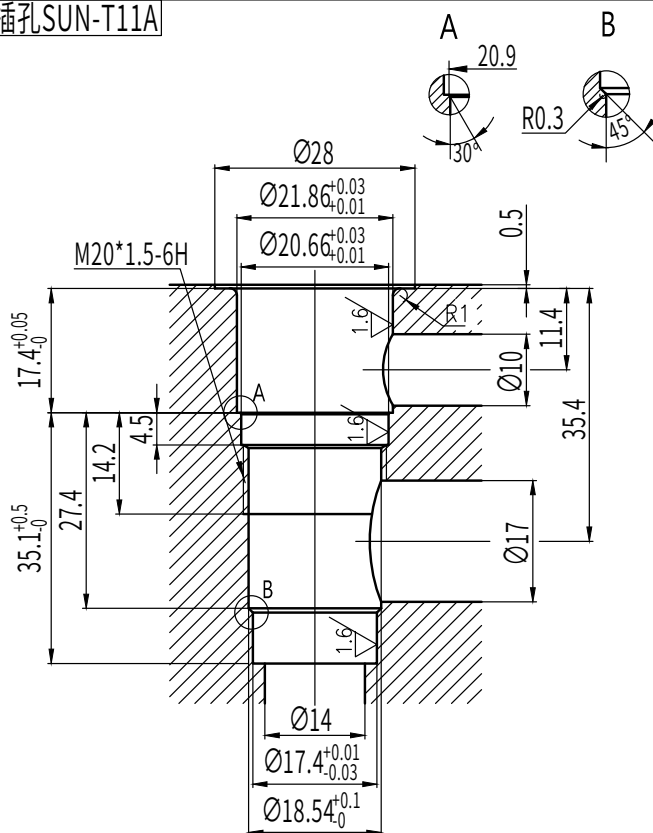


卸载阀 Unloading Valve

配套元件 Component Parts



插孔 SUN-T11A



产品说明

- 该阀可用于低压泵流量卸载使用
- 最大压力: 315bar
- 额定流量: 60L/min(见压力流量曲线)
- 导压比3:1
- 工作温度: -17°C~+90°C
- 油液: 矿物油粘度7.4~420 cSt
- 油质的清洁度为NAS11级, 需要25或更精密的过滤器

Features

- Unloading value, for low pressure use
- Max. Pressure: 315bar
- Rated Flow: 60L/min (See pressure drop VS. flow graph)
- Pilot Ratio: 3:1
- Working Temperature: -17°C~+90°C
- Fluid: Mineral-based fluids with viscosities of 7.4 to 420 cSt
- The quality of the fluid is degree NAS11, 25 micron or finer filter is recommended

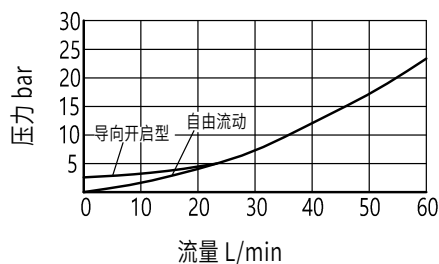
型号说明 How to Order

CHA-06-L A N

1 2 3 4 5

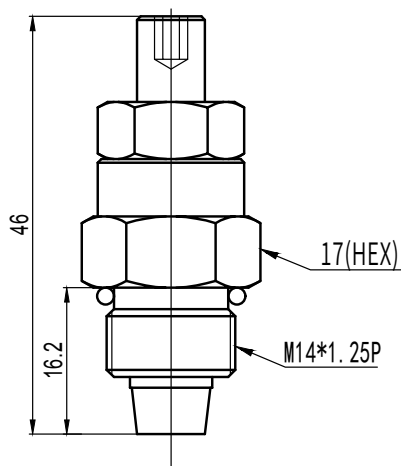
- 1 功能 Function
CHA = 卸载阀 Unloading Valve
- 2 规格 Size
06 = 06规格
- 3 调压范围 Pressure Range
L: 5~60
- 4 调节方式 Adjustment Way
A: 内六角式, 可缺省 Tool Adj
B: 调节手轮 Hand Knob
- 5 油封材质 Seal Material
N: 丁腈橡胶 Nitrile Rubber, 可缺省 Buna-N
V: 氟橡胶 Viton

压力损失曲线 Flow-Pres. Drop Curve

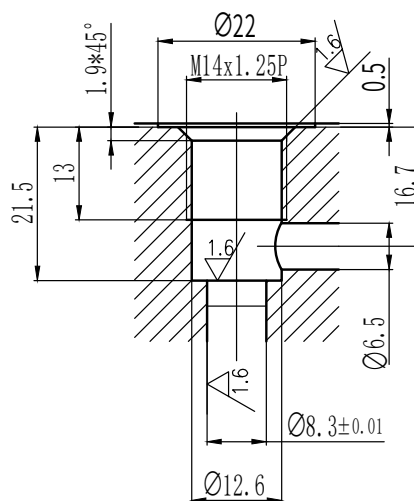


节流阀 Needle Valve

配套元件 Component Parts



插孔T201



产品说明

- 该阀体积小，可调节流量大小至完全关闭，常用于双向节流，缓冲或作截止阀使用
- 最大压力：280bar
- 额定流量：10L/min
- 工作温度：-17°C~+90°C
- 油液：矿物油粘度7.4~420 cSt
- 油质的清洁度为NAS11级，需要25或更精密的过滤器

Features

- The volume of this valve is small. This value can adjust the flow rate till complete close ;Commonly used in two-way throttle, as a stop valve
- Max.Pressure: 280bar
- Rated Flow: 10L/min
- Working Temperature: -17°C~+90°C
- Fluid: Mineral-based fluids with viscosities of 7.4 to 420 cSt
- The quality of the fluid si degree NAS11, 25 micron or finer filter is recommended

型号说明 How to Order

CST-01-S A N

1 2 3 4 5

1 功能 Function

CST = 节流阀 Needle Valve

2 规格 Size

01=01规格

3 限流原理 Flow Limit Principle

S:锥形杆限流(标准型), 可缺省Taper Type (Standard)

4 调节方式 Adjust Way

A:内六角式, 可缺省 Tool Adj

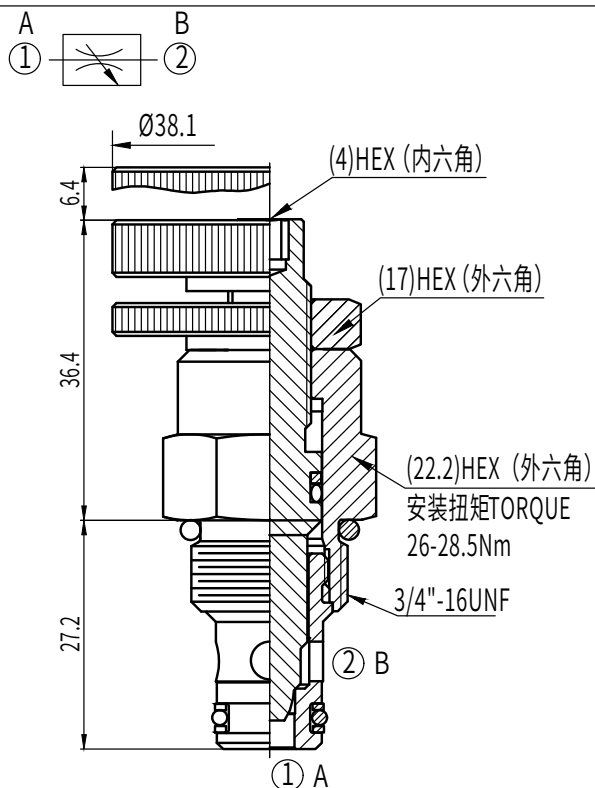
5 油封材质 Seal Material

N:丁腈橡胶 Nitrile Rubber, 可缺省 Buna-N

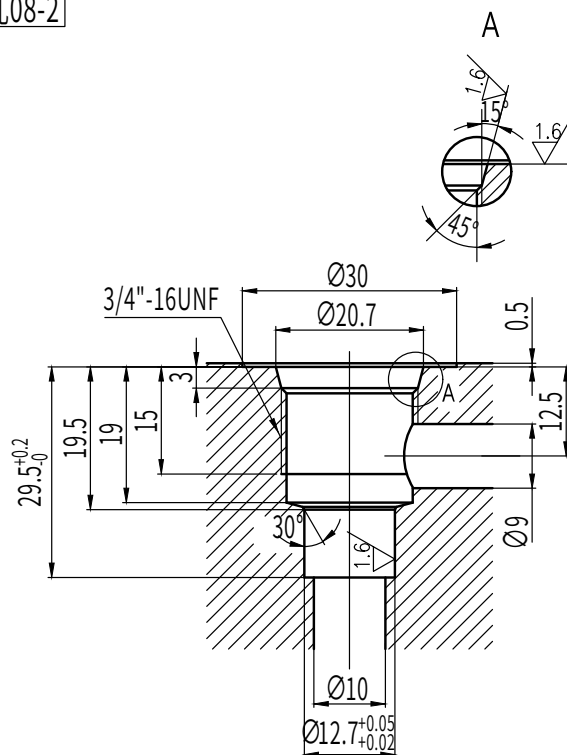
V:氟橡胶 Viton

节流阀 Needle Valve

配套元件 Component Parts



插孔08-2



产品说明

- 该阀可双向调节流量大小至完全关闭，常用于双向节流，缓冲或作截止阀使用
- 工作压力：280bar
- 流量：30L/min(见压力流量曲线)
- 内泄漏：3滴/min (280bar时)
- 工作温度：-40°C~+120°C
- 油液：矿物油粘度7.4~420 cSt
- 油质的清洁度为NAS11级，需要25或更精密的过滤器

Features

- This valve can adjust the flow rate till complete close ;Commonly used in two-way throttle, buffer or as a stop valve
- Working Pressure: 280bar
- Flow: 30L/min(See pressure drop vs. flow graph)
- Internal Leakage: 3 drops/min max. at 280bar
- Temperature: -40°C~+120°C
- Fluids: Mineral-based fluids with viscosities of 7.4 to 420 cSt
- The quality of the fluid si degree NAS11, 25 micron or finer filter is recommended

型号说明 How To Order

CNV2-08-*

1 2 3

1 功能 Function

CNV2=手动节流阀
Manually-adjustable Needle Valve

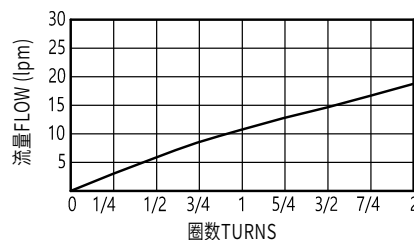
2 规格 Size

08=08规格

3 调节方式 Adjustment Way

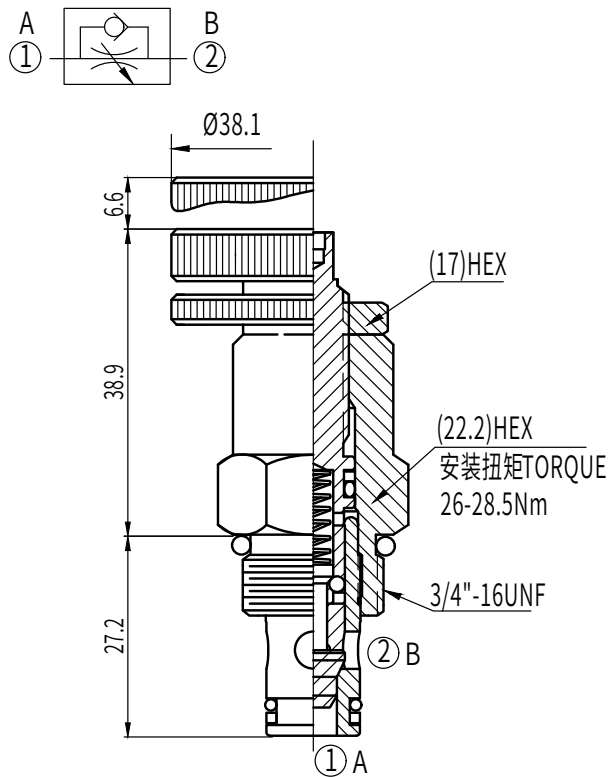
K=调节手轮 Hand Knob 1-1/2'Dia Knob
空白 Blank=内六角调节杆
Omit for 1/4" Hex Allen Head

压力-流量曲线PRESSURE DROP VS.FLOW
32cSt oil @40°C ΔP=5.5bar

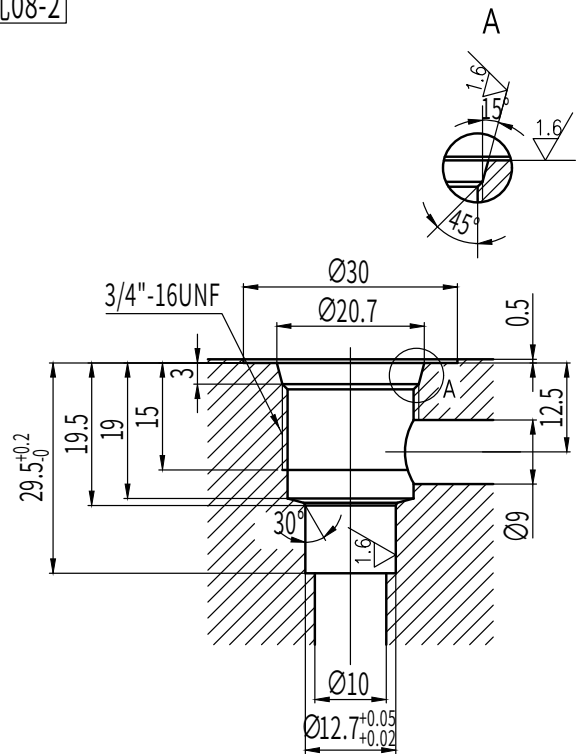


单向节流阀 Flow Control Valve

配套元件 Component Parts



插孔08-2



产品说明

- 该阀适用于单向节流，反向自由流动不受控制
- 最大压力：280bar
- 额定流量：18L/min
- 内泄漏：3 滴/min
- 工作温度：-40°C~+120°C
- 油液：矿物油粘度7.4 ~420 cSt
- 油质的清洁度为NAS11级，需要25或更精密的过滤器

Features

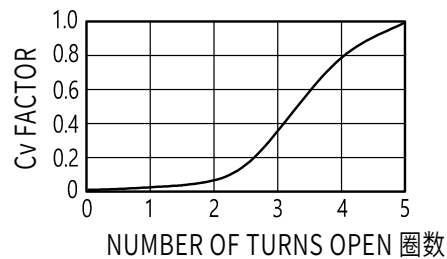
- This valve is used to control flow at an adjusted value in one direction. The flow in reverse direction is free
- Max. Pressure: 280bar
- Rated Flow: 18L/min
- Internal Leakage: 3 drops/min
- Working Temperature: -40°C~+120°C
- Fluids: Mineral-based fluids with viscosities of 7.4 to 420 cSt
- The quality of the fluid is degree NAS11, 25 micron or finer filter is recommended

型号说明 How to Order

CFC-08-*

- 1 2 3
 1 功能 Function
 CFC=单向节流阀
 Adjust able Cartridge Flow Control Valve
 2 规格 Size
 08=08 规格
 3 调节方式 Adjustment Way
 K=调节手轮 1-1/2' Hand Knob
 空白 Blank=内六角调节杆 (Omit for 4mm Hex Allen head)

压力-流量曲线 PRESSURE DROP VS. FLOW

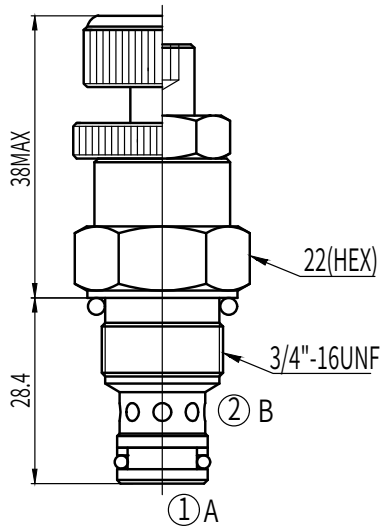
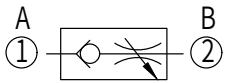


$$\text{FLOW IN GPM} = \frac{Cv \sqrt{P1 - P2}}{\sqrt{Gf}}$$

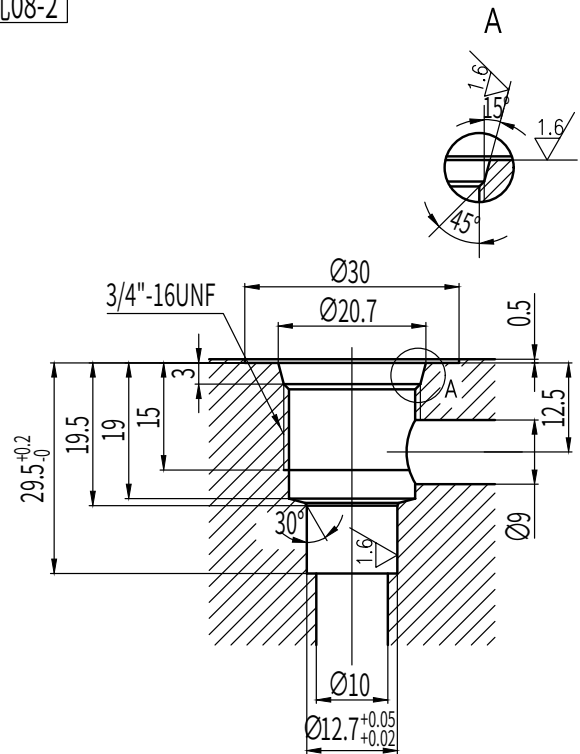
- Cv=Flow Coefficient
 P1=Inlet Pressure(Psi)
 P2=Outlet Pressure(Psi)
 Gf=specific gravity of medium at operating temperature in F°

止回节流阀 Throttle Check Valve

配套元件 Component Parts



插孔08-2



产品说明

- 该阀单向节流，反向截止并有保压功能，可方便系统回路设计需求
- 最大压力：280bar
- 额定流量：20L/min
- 工作温度：-17°C~+90°C
- 油液：矿物油粘度7.4~420 cSt
- 油质的清洁度为NAS11级，需要25或更精密的过滤器

Features

- The valve has one-way throttling, reverse cut-off and keep pressure. It's convenient for use in system design
- Max. Pressure: 280bar
- Rated Flow: 20L/min
- Working Temperature: -17°C~+90°C
- Fluids: Mineral-based fluids with viscosities of 7.4 to 420 cSt
- The quality of the fluid is degree NAS11, 25 micron or finer filter is recommended

型号说明 How to Order

CCS-08-S A N

1 2 3 4 5

1 功能 Function

CCS= 止回节流阀 Throttle Check Valve

2 规格 Size

08=08 规格

3 动作 Action

S:标准型，可缺省 Standard

4 调整方式 Adjusting Way

A:内六角式，可缺省 Tool Adj

B:调节手轮 Hand Knob

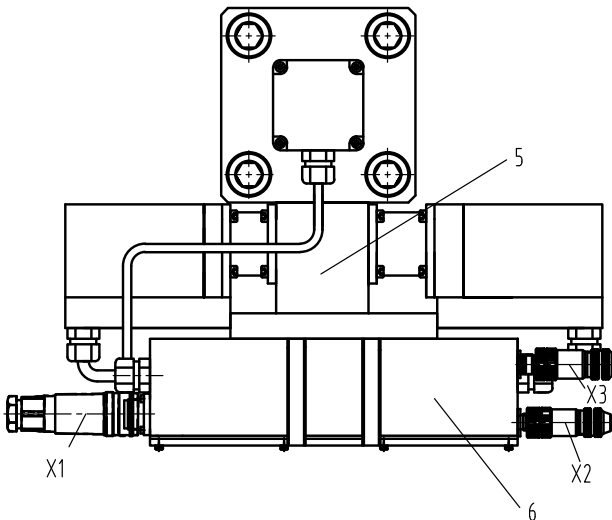
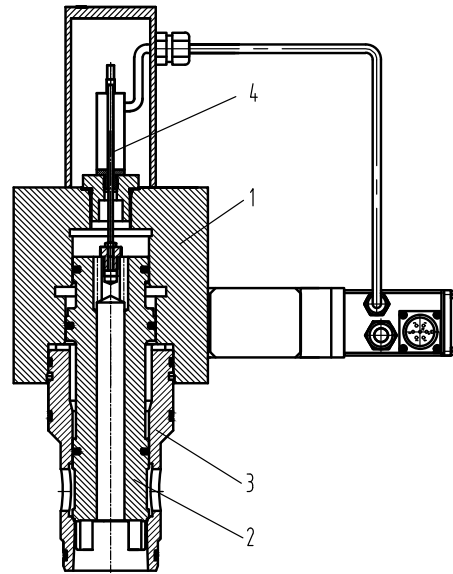
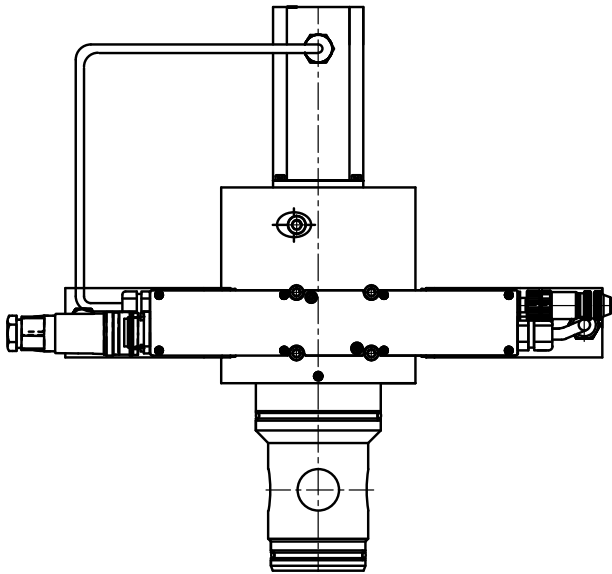
5 油封材质 Seal Material

N:丁腈橡胶 Nitrile Rubber, 可缺省 Buna-N

V:氟橡胶 Viton

高频响插装阀（如需更详细资料，请咨询本公司） High Response Cartridge Valve

组成及功能



组成及功能

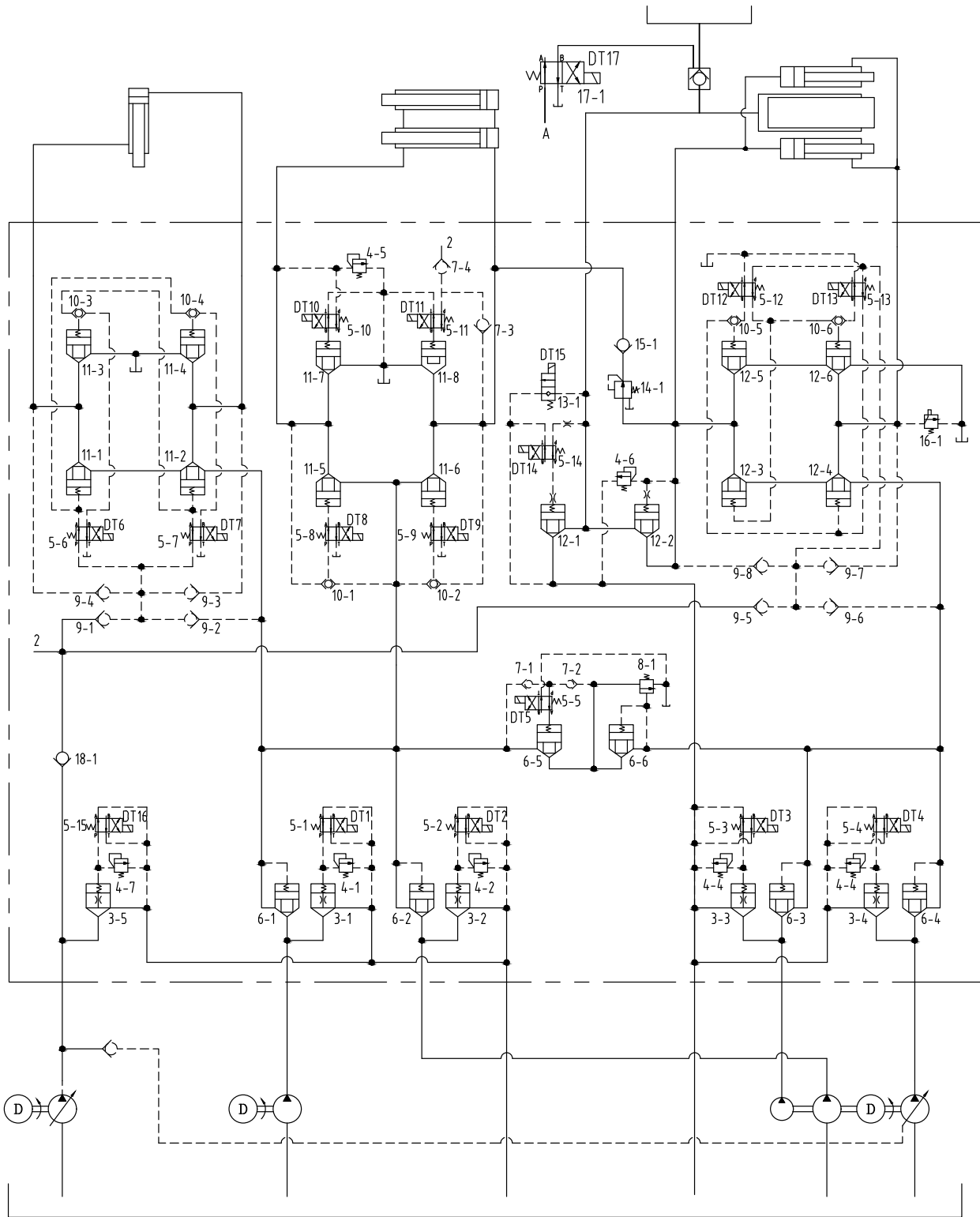
2SFCD型数字伺服先导控制的高频响插装阀主要包括件盖板（1）、控制阀芯（2）、阀套（3）、主阀芯位置传感器（4）、先导控制阀（5）、集成控制器（6）、总线入口连接器（X2）、总线出口连接器（X3）和电源、模拟信号连接器（X1）组成。通过控制先导控制伺服阀（5）流量，快速精确控制主阀芯的位移，从而精确控制伺服插装阀的流量。

集成运动轴控制器、数字伺服阀、主阀芯与阀套组成的封闭控制油腔及主阀位移传感器组成阀芯位置闭环系统。控制器接收远方主阀芯位置控制指令，与主阀芯反馈值进行比较并进行高速运算，输出指令值驱动先导伺服阀的伺服驱动电机，使主阀芯快速精确达到指令位值。伺服阀采用外控先导油路，使主阀A腔至B腔流量或B腔至A腔流量都得到精确控制。

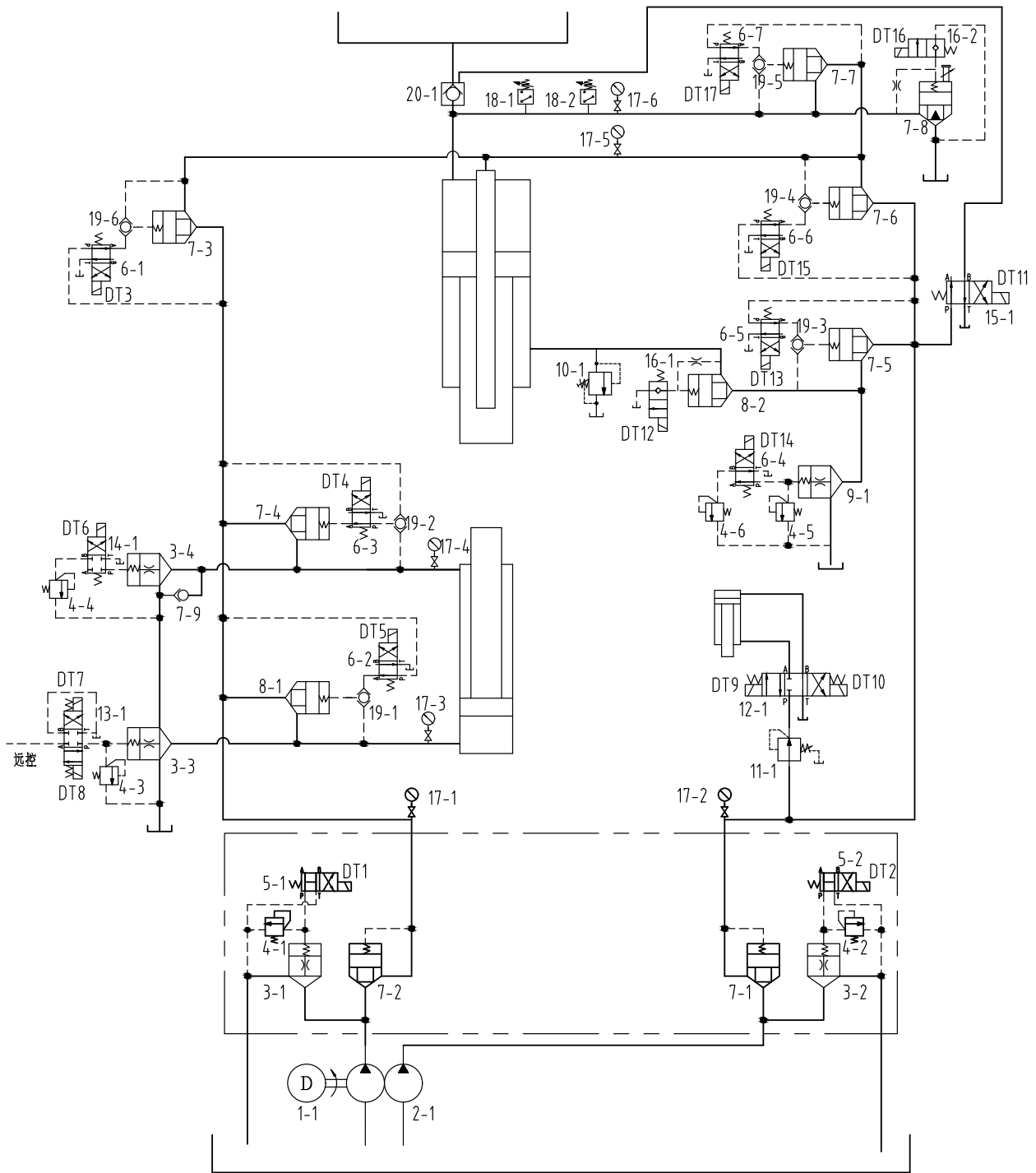
特点

- 1、主阀芯、阀套及阀体采用国际标准通用结构，接口、尺寸均符合国际标准。
- 2、先导控制阀采用伺服阀结构，先导阀芯由电机驱动，先导阀阀芯驱动力大，抗油液污染力强，阀芯不易卡滞；
- 3、控制器集成运动控制功能，可实现对主阀芯运动轨迹实时快速精密控制；
- 4、多种数字通讯接口，可与主流的PLC、PC和HMI通讯连接组成系统。
- 5、可实现多种现场实时总线控制，具有EtherCAT、CANopen、Modbus485、Ethernet/IP、Profinet、CC-link等多种总线接口。
- 6、兼顾传统模拟量（4~20mA或0~10V）指令控制方式。

二通插装逻辑阀在铝型材挤压机上的应用（如需更详细资料，请询本公司）



二通插装逻辑阀在油压拉伸机上的应用（如需更详细资料，请咨询本公司）



尽精微 致广大 铸品牌

